



Stacey Gilmour
Outreach & Scrutiny Officer
Direct: 020 8379 4187

e-mail: stacey.gilmour@enfield.gov.uk

CRIME SCRUTINY STANDING WORKSTREAM

**Tuesday, 22nd March, 2016 at 7.00 pm in the Room 1, Civic Centre,
Silver Street, Enfield, EN1 3XA**

Membership:

MEMBERS : Councillors: Joanne Laban (Chair), Ahmet Hasan, Sarah Doyle, Elaine Hayward, Mary Maguire (Vice-Chair) and Patricia Ekechi

Co-opted Member: Natalie Sherman

Enfield Youth Parliament Co-optees: 2 Representatives

AGENDA

- 1. WELCOME & APOLOGIES**
- 2. DECLARATIONS OF INTEREST**
- 3. TACKLING GANGS & SERIOUS YOUTH VIOLENCE STRATEGY & ACTION PLAN UPDATE** (Pages 1 - 6)

To receive a report from Andrea Clemons, Head of Community Safety.

- 4. SSCB PERFORMANCE MANAGEMENT** (Pages 7 - 12)

To receive a report from Rod Bennett, Community Safety Information Manager.

- 5. SSCB PARTNERSHIP PLAN & STRATEGIC PRIORITIES**

To receive a verbal update from Andrea Clemons, Head of Community Safety.

6. UPDATE ON POLICE NUMBERS (Pages 13 - 14)

To receive an update from Superintendent Carl Robinson on Police numbers in the Borough.

7. SAFER NEIGHBOURHOOD BOARD UPDATE (Pages 15 - 18)

To receive a report from Tim Fellowes, Chair, Safer Neighbourhood Board.

8. WORK PROGRAMME 2015/16 (Pages 19 - 22)

To note the Workstream's Work Programme for 2015/16.

9. MINUTES OF THE MEETING HELD ON 12 JANUARY 2016 (Pages 23 - 32)

To receive and agree the Minutes of the meeting held on 12 January 2016.

10. ANY OTHER BUSINESS

11. DATES OF FUTURE MEETINGS

Dates of future meetings will be agreed at full council on 11 May 2016.

12. EXCLUSION OF PRESS & PUBLIC

To consider, if necessary, passing a resolution under Section 100(A) of the Local Government Act 1972 excluding the press and public from the meeting for the item of business listed in Part 2 of the agenda on the grounds that it will involve the likely disclosure of exempt information as defined in those paragraphs of Part 1 Schedule 12A to the Act, (as amended by the Local Government (Access to Information) (Variation) Order 2006), as are listed on the agenda (Please note there is no Part 2 agenda).

Gangs Strategy Update

1 Identification

Information Sharing

Information sharing is covered by either S115 of the Crime and Disorder Act 1998 or the “Shared Interests” ISP that Enfield strategic partners commissioned to enable partnership working. Secure email further enables the exchange of sensitive information.

The Gangs Partnership Group has now evolved into a fortnightly meeting and many partners attend including:

- Youth Offending Unit (YOU)
- Probation both CRC and NPS
- Education
- Social Care
- Leaving Care
- Access to Resources Team
- Oasis
- Youth Services
- Parenting
- Police
- North Middlesex Hospital
- St Christophers Runaway team
- DWP
- Child Sexual Exploitation (CSE) team
- Change and Challenge

The meeting has progressed to the point where we have moved from not only having a representative from each agency but the case manager or offender manager will attend for each young person who is on the agenda.

The CSU coordinates the meeting and all partners share information in advance of the meeting to ensure that the meeting is as effective as possible.

The two agencies that are absent from the group are housing and mental health. Mental health is the more important of the two and work is ongoing to try and achieve representation for the future.

Referrals can be made by any agency/organisation and each one is initially screened by police, YOU, Probation, social care, and education before information is requested from all partners.

All young people discussed at the GPG are scored by Change and Challenge and if they meet the criteria assistance is offered to the family.

There is a clear demarcation between GPG and MAPPA to ensure that there is no confusion as to which meeting has primacy and these lines clear.

With the advent of the both the CSE team and the better identification, agreements are in place with the team and the MASE and TSEM meetings over who has primacy.

There is concern that the average age of young people coming to notice for gang related offending or involvement is decreasing. Work is ongoing to try and find out whether this is short term or a longer term issue that we need to understand and then tackle.

The Mayor's Office for Policing and Crime (MOPAC) are coordinating work on "county lines" with the National Crime Agency (NCA) – where young people from Enfield are sent out to various parts of the country to deal drugs. This work is starting to suggest how better information sharing between police colleagues can assist in understanding the issues of who is involved and where the drug dealing is taking place. Linked to this are the increases in young people missing from home and CSE issues as these young people are often young (13/14 years) and as such vulnerable.

The North Middlesex Hospital (NMH) A&E project, provided by Oasis, was officially launched in November 2015 and this continues to grow. Over the last 12 months there have been 224 referrals of which 168 were Enfield residents, 93 young people were able to be contacted and offered support.

As the NMH is positioned very close to the border between Enfield and Haringey colleagues in Haringey have successfully applied for funding to provide a similar service, provided by Oasis, so that all young people from both boroughs are provided with the same service. The NMH have invested in this project by allocating accommodation and providing IT. In addition they have commissioned additional youth work due to demand.

Children's Safeguarding in both boroughs have identified that they want to provide young people who attend A&E with information on various services ranging from teenage pregnancy to gang affiliation and sexual exploitation. There is a general agreement that this is a good idea and funding is being identified to allow this to happen as a pilot scheme.

The A&E project links in with the St Giles Trust who provide a similar service at the Royal London Hospital which is commissioned by MOPAC and information is shared between the teams

Due to the increased tensions between gangs in Enfield and Haringey there has been a renewed effort between the boroughs to meet more regularly and share information. There are now monthly operational meetings in place with quarterly strategic meetings planned. Mapping of young people who are either in care or missing is currently being undertaken to better understand the issues that they present and both borough share their GPG minutes. This cross border working allows better and quicker allocation of resources to tackle identified emerging issues.

Domestic violence and abuse are areas that need to be better understood as there appears to be an increase in sexual violence that is gang related.

2 Prevention

The GPG coordinates action plans that support and divert young people from joining gangs. Enfield commissions, using MOPAC funding, St Giles Trust to provide a gang exit strategy worker who works with young people and their families to support them either leaving the gang lifestyle or preventing them from joining gangs. Partners such as social care, Change and Challenge and Oasis support this work. The current St Giles worker has worked or is working with 24 young people since taking up the post.

The Safer Neighbourhood Board (SNB) support projects that provide mentoring to young people, provide trips to the Ben Kinsella Trust exhibition in Islington and the provision of a Crisis Action Team (CAT) by LYRC.

Dept. Work and Pensions (DWP) provide a worker who engages with gang members and works with them to assist them into employment or training. This post is very beneficial to the whole process and the post holder has all the necessary skills to work with this cohort of young people who are intelligent but do not have the necessary qualifications to access work.

The Gangs Call In continues and 10 have now been delivered. The police gangs coordinator post is currently vacant and this has prevented any further dates being agreed. The post is currently being recruited to and it is anticipated that dates will be agreed for 2016.

The police have delivered Crest to some secondary schools within the borough. This is a version of the Call In and targets whole year groups to inform them of the risks and consequences of joining gangs.

There are plans to enhance this work by identifying a small group who are at higher risk and then working with them over a period of a term to divert them from gangs by delivering the St Giles SOS+ project. Parenting workshops would also be offered to the families of this group.

Providing access for young people who seek support is more problematic as the provision of youth services has been restructured. We are looking at local providers and Oasis was successful in bidding for a SNB grant that allows them to provide this type of work in the north eastern corner of the borough.

3 Intervention

Many of the comments in the prevention paragraphs above comment on intervention work.

A whole family approach is taken to this work and we try and engage with the family and particularly parents in order to support them in diverting their children away from gangs. The parenting service is very helpful in providing workshops that target parents of known gang nominals or youths at risk of becoming gang nominals.

Over the last 12 months the CSU has provided training to front line professionals in the borough through the Safeguarding Children's Board and through the Access to Resources Team who hold training events for providers in the borough. The latter is particularly useful as there is an increase in the number of LAC children who are being placed in the borough by other authorities who are known to have gang affiliations. This is particularly difficult to manage and any increase in communication between the providers and the local authority is welcomed.

4 Enforcement

Since the strategy was agreed there has been an overall increase in serious youth violence in both Enfield and the Metropolitan Police area of 5.7% for Enfield and 6.1% increase for London.

Since this strategy was agreed there had been a change in Anti-Social Behaviour legislation. In addition, since October 2015, the Community Safety Unit ASB team has taken on responsibility for managing the highest priority (Priority 1) cases for Council Housing.

Tenancy enforcement will now be robustly taken against any tenant who breaches the gang/criminal activity section of their tenancy agreement.

We use all enforcement options that are available to us and over the last 12 months 12 Criminal Behaviour Orders (CBO) against gang members have been obtained, 1 Anti-Social Behaviour Order and 1 gang injunction.

Consultation for enforcement against gang members is undertaken at the GPG so that all partners can contribute.

The MPS has recently held a firearm amnesty called Operation Magpie that was held between 23/11/15 and 6/12/15. This was specifically targeting firearms that are available or held by gang members.

Conclusion

The picture of gang related offending Enfield is constantly changing and over the last 12 months we have seen an increase in the levels of Serious Youth Violence. The relationship between various gangs continues to change due to various factors and there is a constant challenge to understand this and the risks that are produced as a result.

The age of young people who are becoming involved in gangs appears to be lowering and the number of knives that are being carried is of concern.

We are beginning to better understand the issues of Child Sexual Exploitation in the gangs remit and the “county lines” concerns that are now affecting Enfield.

This page is intentionally left blank

Standing Crime Scrutiny Panel Performance Report

Executive Summary**Agenda Item****New updates on performance indicators since last meeting:**

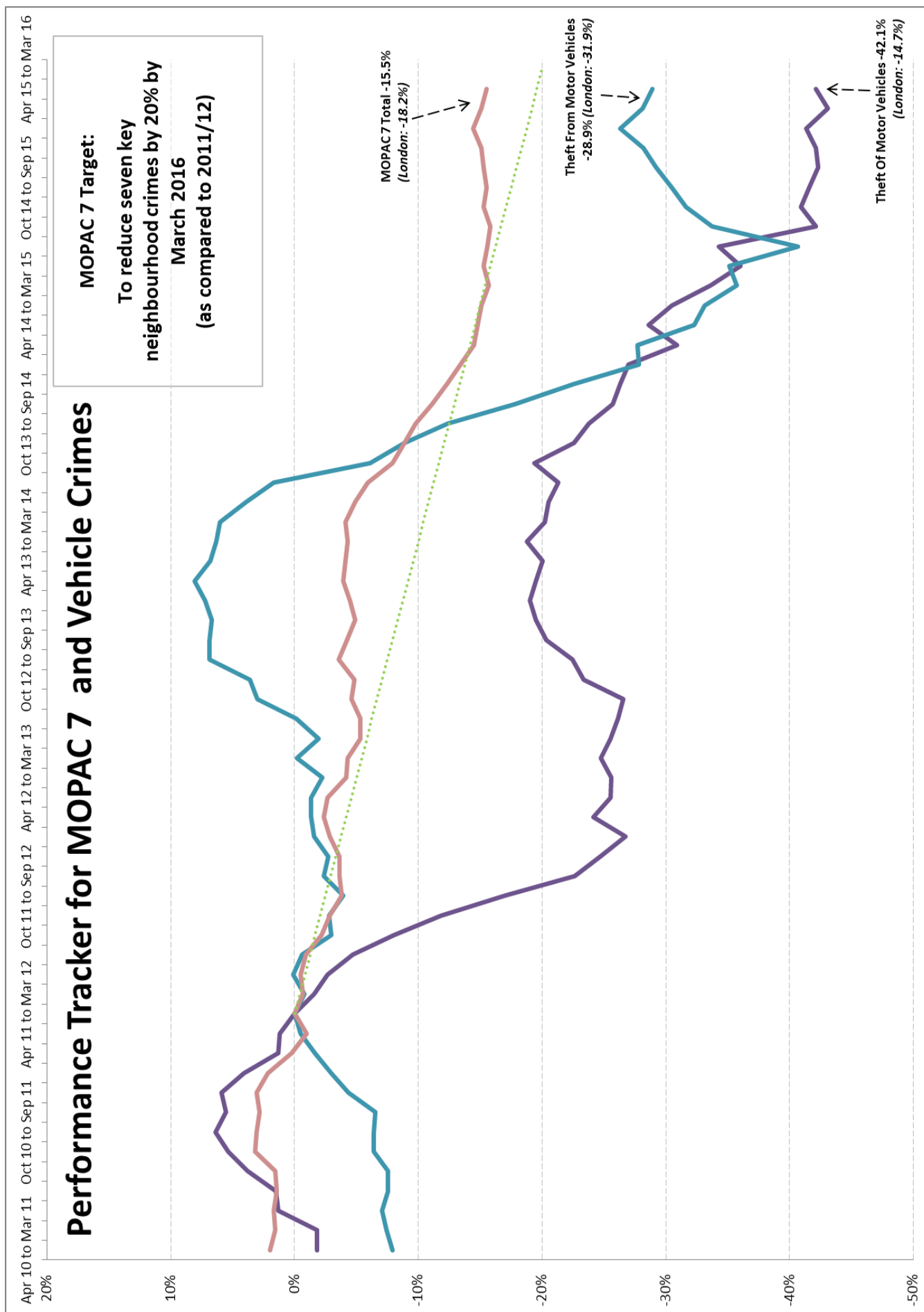
- ASB calls (-5.3%), Burglary (-6.8%), Criminal Damage (-1.3%), and Theft of Motor Vehicles (-17.3%) are all currently experiencing reductions in the rolling 12-months to 8th March 2016.
- Enfield is currently experiencing a -5.1% decrease in Serious Youth Violence Victims in the FY 15/16 to the 28th February. London has experienced an overall increase of +4.0% in the same period.
- Overall, MOPAC Seven crime categories are experiencing a 0.6% increase in the rolling 12 months to date.
- Reported Domestic Abuse Violence with Injury offences have risen by +4.4% in the FY to 2nd March 2016.
- Four of the seven MOPAC indicators are currently experiencing increases in the 12-months rolling (Theft from Person +1.1%, Robbery +18.4%, Theft from M/V +4.3%, and Violence with Injury +2.4%).

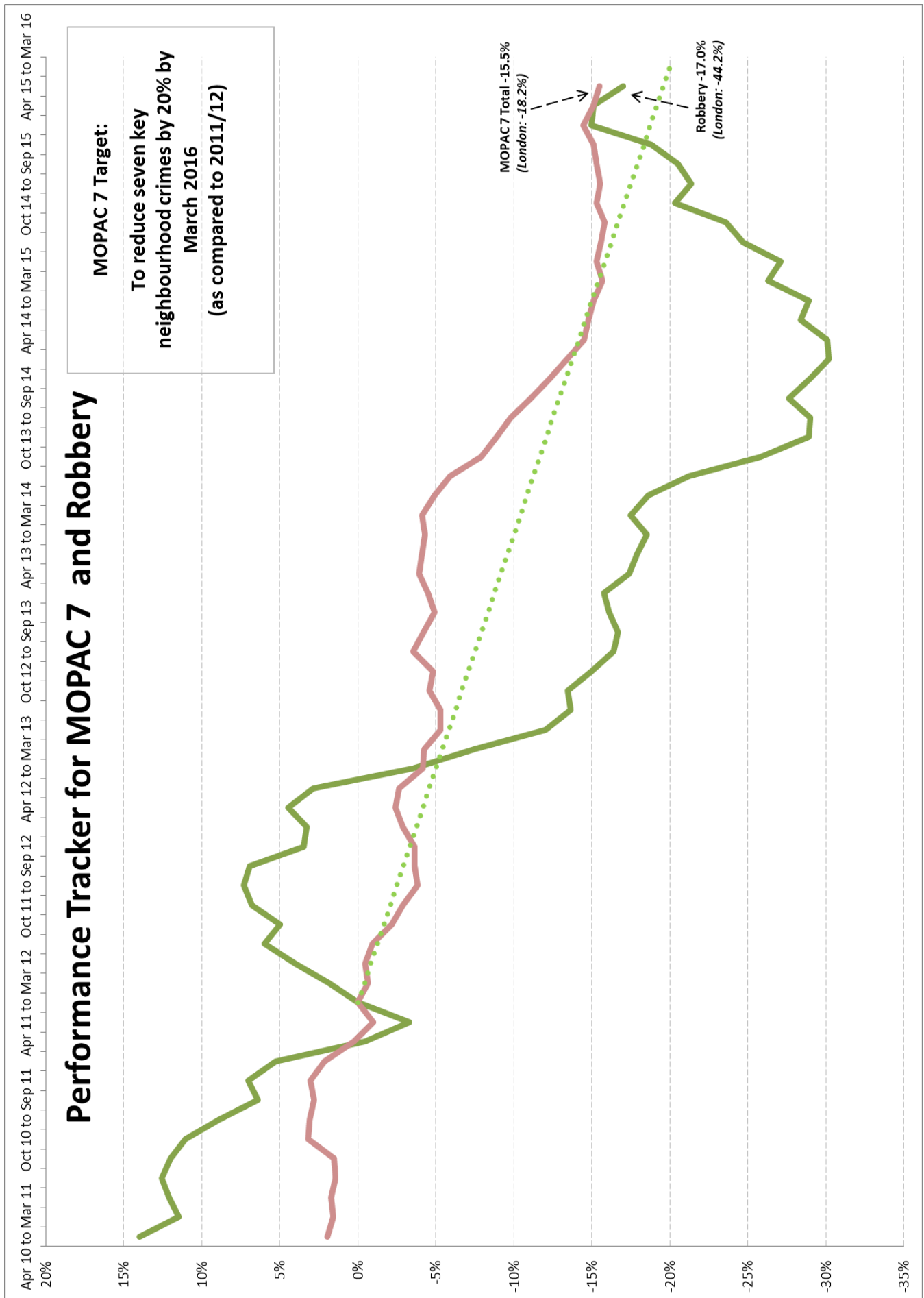
1. Performance Overview**MOPAC 7 and SSCB Priorities**

MOPAC 7 (Data to 8th of March 2016)							
Crime Type	Baseline 2011/12	Target 2015/16	Current 12- Months	Enfield % Change 12- Months	MPS % Change 12- Months	Enfield % Change Baseline	MPS % Change Baseline
Burglary	3,542	2,834	2,776	-6.8%	-5.1%	-21.6%	-27.2%
Criminal Damage	2,598	2,078	2,084	-1.3%	5.4%	-19.8%	-12.4%
Robbery	1,123	898	935	18.4%	-1.4%	-16.7%	-44.3%
Theft from M/V	3,011	2,409	2,118	4.3%	-1.5%	-29.7%	-32.0%
Theft of M/V	1,082	866	625	-17.3%	2.0%	-42.2%	-14.7%
Theft from Person	474	379	464	1.1%	9.6%	-2.1%	-18.5%
Violence with Injury Total	1,674	1,339	2,389	2.4%	5.8%	42.7%	20.1%
Violence with Injury Excl DV	n/a	n/a	1,414	-1.3%	6.2%	n/a	n/a
MOPAC 7 Total	13,504	10,803	11,391	0.6%	1.8%	-15.6%	-18.3%
Additional SSCB Priorities							
ASB Calls	14,014	11,211	8,091	-5.3%	-9.2%	-42.3%	-44.3%
Hate Crime ²	123	N/A	310	10.7%	21.1%	152.0%	66.9%
Serious Acquisitive Crime ¹	7,846	6,276	5,769	0.7%	-2.7%	-26.5%	-31.09% ²
Serious Youth Violence ²	293	232	275	5.7%	6.1%	-6.1%	-8.3%
Domestic Abuse	1,946	N/A	2,934	15.6%	11.2%	50.8%	n/a
Total Notifiable Offences	22,946	N/A	22,816	2.0%	4.4%	-0.6%	-9.4%

1. Serious Acquisitive Crime is defined as Domestic Burglary, Robbery (Personal & Business), Theft from Motor Vehicle and Theft of Motor Vehicle.

2. Data to 15th December 2015.





Standing Crime Scrutiny Panel Performance Report

London Borough Ranking Tables – MOPAC 7 & Total Notifiable Offences Percentage Changes

MOPAC 7 Crime			
Borough	Feb14-Jan15	Feb15-Jan16	Change
Hillingdon	10830	9970	-7.94%
Redbridge	10014	9387	-6.26%
Bexley	6203	5831	-6.00%
Richmond upon Thames	5270	4984	-5.43%
Sutton	5396	5158	-4.41%
Merton	6145	5936	-3.40%
Wandsworth	10785	10449	-3.12%
Westminster	19525	19088	-2.24%
Ealing	12285	12132	-1.25%
Waltham Forest	10264	10155	-1.06%
Haringey	12660	12537	-0.97%
Croydon	13520	13401	-0.88%
Newham	14297	14188	-0.76%
Lambeth	15176	15064	-0.74%
Bromley	9796	9737	-0.60%
Barking & Dagenham	8183	8154	-0.35%
Enfield	11464	11453	-0.10%
Havering	7775	7843	0.87%
Greenwich	9600	9769	1.76%
Harrow	6120	6255	2.21%
Southwark	13438	13858	3.13%
Kensington & Chelsea	7610	7904	3.86%
Kingston upon Thames	3972	4130	3.98%
Hackney	12228	12884	5.36%
Brent	11234	11844	5.43%
Hounslow	9106	9612	5.56%
Barnet	11899	12589	5.80%
Hammersmith & Fulham	7914	8418	6.37%
Tower Hamlets	12306	13166	6.99%
Lewisham	10382	11118	7.09%
Camden	12505	13541	8.28%
Islington	12576	13890	10.45%
London Total	330478	334445	1.20%

Total Notifiable Offences (TNO)			
Borough	Feb14-Jan15	Feb15-Jan16	Change
Redbridge	20119	19347	-3.84%
Westminster	49087	48964	-0.25%
Bexley	12312	12341	0.24%
Richmond upon Thames	10664	10712	0.45%
Hillingdon	21792	21893	0.46%
Sutton	10789	10900	1.03%
Enfield	22396	22648	1.13%
Croydon	28339	29048	2.50%
Hammersmith & Fulham	19827	20349	2.63%
Brent	25080	25759	2.71%
Southwark	30050	31017	3.22%
Waltham Forest	20838	21556	3.45%
Newham	28989	30074	3.74%
Greenwich	20811	21606	3.82%
Kingston upon Thames	9676	10052	3.89%
Bromley	20221	21049	4.09%
Merton	12038	12595	4.63%
Ealing	25802	27023	4.73%
Wandsworth	22042	23199	5.25%
Lambeth	32748	34566	5.55%
Kensington & Chelsea	18623	19657	5.55%
Hounslow	20552	21731	5.74%
Harrow	12296	13021	5.90%
Barnet	23170	24549	5.95%
Barking & Dagenham	16223	17236	6.24%
Tower Hamlets	26934	28629	6.29%
Hackney	25311	27197	7.45%
Havering	15244	16389	7.51%
Camden	28058	30195	7.62%
Haringey	23606	25479	7.93%
Islington	25807	28235	9.41%
Lewisham	21837	24377	11.63%
London Total	701281	731393	4.29%

Standing Crime Scrutiny Panel Performance Report

2. Serious Acquisitive Crime (SAC)

Robbery

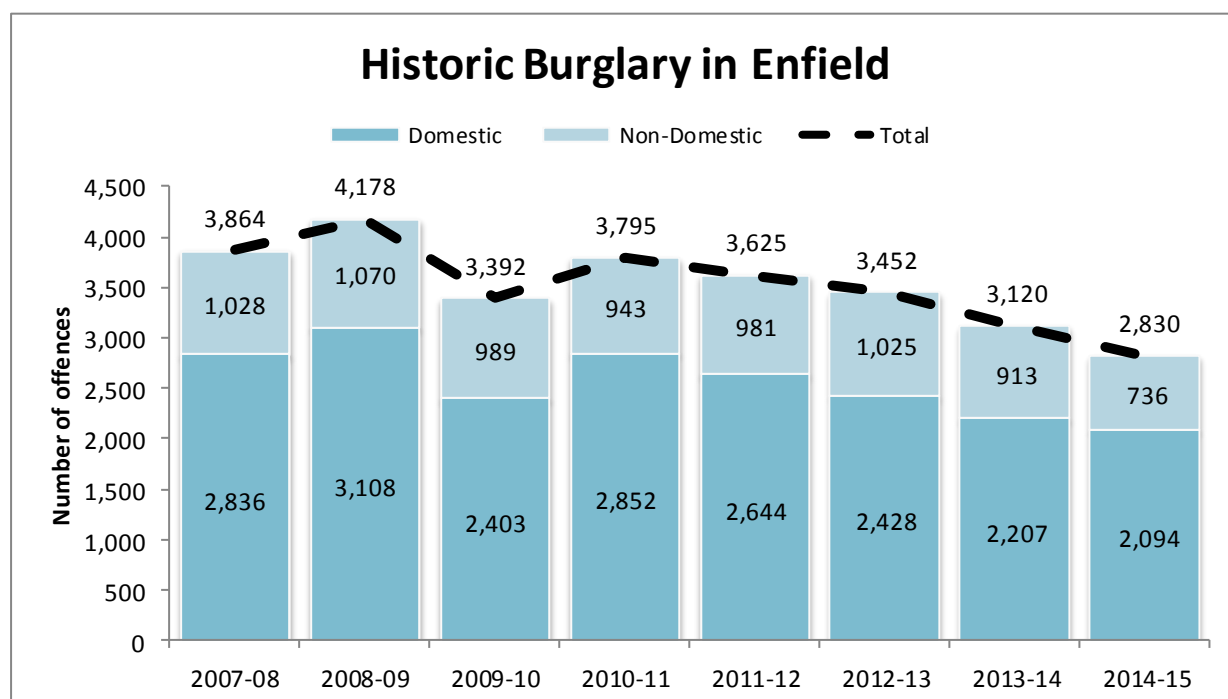
- Currently experiencing a **+18.4% increase (+145)** in the rolling 12-months and a **-16.7% reduction** compared to 2011/12.
- Robberies have historically been at their highest in April and May and we therefore could see a rise in robberies in the next few months.
- Robberies are being monitored through the Enfield Joint Tasking Action Group (JTAG) process.

Vehicle Crime

- Currently experiencing a **+4.3% increase (+88)** for Theft from M/V and a **-17.3% decrease (-131)** for Theft of M/V in the rolling 12-months.
- In February, police received additional resources to target Vehicle Crime. The operation was considered a success and will likely be repeated in the near future.
- More than three-quarters of all vehicle crime offences are Theft from M/V
 - Thefts of licence plates consistently constitute around 30% of Theft from M/V.
 - Thefts of tools consistently occur at repeat locations where vans are parked overnight.
- The Enfield Joint Tasking Action Group (JTAG) is monitoring the evolution of Theft from Motor Vehicle.

Burglary

- Currently experiencing a **-6.8% reduction (-204)** in the rolling 12-months and a **-21.6% reduction** compared to 2011/12.
- Currently, a proportion of burglary offenders are committing crime in Barnet and the bordering area of Enfield
- Currently household burglary in Enfield is at its lowest level in several years.
- MetTrace and the alley gating schemes continue to be implemented across the borough.



Standing Crime Scrutiny Panel Performance Report

3. Violence Against Women & Girls (VAWG)

- Reported Domestic Abuse Violence with Injury offences have risen by +4.4% in the FY to 2nd March 2016.
- There has been an increase in reported rape offences of +10.2% Enfield in the 12 months to 2nd March 2016.
- The sanctioned detection rate for Domestic Abuse has fallen from 37.5% in the previous rolling 12 months to March to 32.5% in the current rolling 12 months. Over this same period, London wide data also showed a decrease in the sanctioned detection rate (37.2% to 33.1%).
- There has been a significant increase in the number of MARAC referrals made by police over the past year.
- In 2015, Enfield had the most MARAC referrals in London, with 389 referrals. There were 2,724 referrals in London. Enfield also held the most MARAC Conferences, with 273. There were 2,190 MARAC Conferences in London.
- There were 29 Right to Ask requests in Enfield in 2015, which is lower than the London-wide average of 39 requests. There were 10 Right to Know requests, which is higher than the London-wide average of 5 requests.
- An increasing proportion of the referrals to the NLRCC now come from the police.

4. Serious Youth Violence

Serious Youth Violence (MPS Data), data to 28th February 2016.

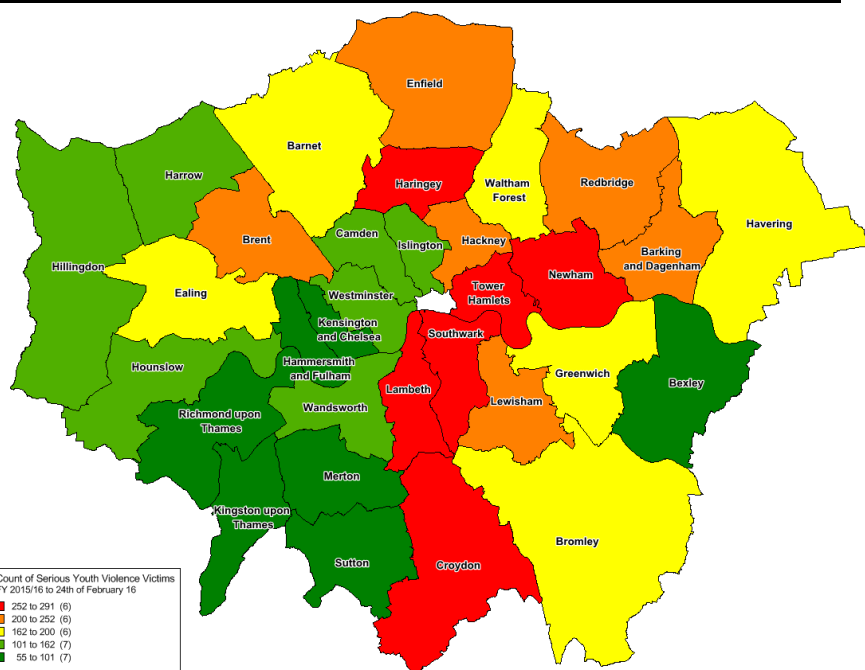
- Enfield is currently experiencing a **-5.1% decrease in Serious Youth Violence Victims** in the FY 15/16 to the 28th February. London has experienced an overall increase of +4.0% in the same period.
- In the same period, Enfield experienced a -58.6% decrease in Serious Violence offences which have been flagged as gang related.

ENFIELD: Changes in Key Gang Related Offences: FY 2014-15 vs. 2015-16

Offence	FY 2014 – 2015 (to 28/02/15)	FY 2015 – 2016 (to 28/02/16)	% Change Enfield	% Change London
Knife Crime	397	404	+1.8%	+0.6%
Knife Injury	132	101	-23.5%	+1.8%
Gun Crime	65	66	+1.5%	+1.3%
Gun Discharged	13	10	-23.1%	+17.7%
Serious Youth Violence Victims	255	242	-5.1%	+4.0%

Serious Youth Violence – Pan-London Performance

- Haringey is currently experiencing a **+12.9% increase in Serious Youth Violence Victims** in the FY 15/16 to the 24th of February. Haringey also experienced a +29.6% increase in gang-related Serious Violence offences. In the same period, Enfield had 239 victims of Serious Youth Violence Victims and Haringey had 280 victims.
- Geographically, North, Inner and East London boroughs are still the most affected by the London wide increase in SYV, with most West London boroughs experiencing reductions over this same period.



REPORT TO: STANDING CRIME SCRUTINY PANEL**DATE: 9th March 2016****REPORT TITLE: Enfield Police Numbers****REPORT AUTHOR:
Superintendent Carl Robinson****PURPOSE OF REPORT:
To provide an update to members on Police Numbers in Enfield****SUMMARY: Enfield has an establishment of 557 police officers. As of Wednesday 9th March 2016 we had 543.79 police officers****1. BACKGROUND**

Police numbers are a topical issue. Enfield Police have had 557 police officers as our target.

2. ISSUES AND CHALLENGES

Police numbers will fluctuate for a number of good reasons. Officers will retire, resign, seek lateral development to specialist teams, move to other Boroughs or move on promotion.

As a Borough we have invested in ensuring we know exactly where our staff are and have a monthly personnel planning meeting to forecast movements and ensure that each of the three main portfolios (Emergency response, Neighbourhoods and CID) all have as close to their budgeted target as possible.

The following chart shows the locations of staff as of 9th March 2016:-

Portfolio	FTE Establishment	ACTUAL 7th Sept
ERT	229	217.26
NPT	165	156.44
CID	156	146.09
SLT	6	14
P/Standards	1	1
T/School		9
Total	557	543.79

TP - Borough Total				
Target Strength	Future Known Actuals	Vacancies	Vacancy Rate	Restricted Officer Strength
Hackney 595.00	575.98	19.02	3.2%	0
Tower Hamlets 638.50	664.42	-25.92	-4.1%	2
Waltham Forest 568.17	556.27	11.90	2.1%	2
Redbridge 491.09	487.89	3.20	0.7%	1
Havering 380.00	398.89	-18.89	-5.0%	0
Newham 764.00	759.94	4.06	0.5%	0
Barking 462.00	473.97	-11.97	-2.6%	0
Enfield 557.00	531.02	25.98	4.7%	2
Haringey 610.00	601.43	8.57	1.4%	0.68

The above table shows the most recent comparison data across the MPS - although this is produced at the end of February 16 with future known actuals and vacancies shown to end of May 16. It should be noted that Enfield is now showing 557 officers as opposed to 561 in the last report. All Boroughs have lost officers with some Boroughs losing 8 officers. This incorporates planning for an enhanced SCO17 (Sexual Offences investigation) which has officers undertaking sexual offence investigations on Boroughs but being provided from a central team.

3. RECOMMENDATIONS

To note this report on Police numbers.

REPORT TO: STANDING CRIME SCRUTINY PANEL**DATE: 22nd March 2016****REPORT TITLE: Enfield Safer Neighbourhood Board****REPORT AUTHOR/S:****Tim Fellows****PURPOSE OF REPORT: To provide an update on the work of the Enfield Safer Neighbourhood Board****1. BACKGROUND**

- 1.1 The Enfield Safer Neighbourhood Board (SNB) has been in place since 1st April 2014. This was a result of the London Mayor's Strategy and the Mayor's Office for Policing and Crime (MOPAC) which required a change to the way in which community engagement on crime and policing issues occurred in London.
- 1.2 Each London borough has its own Safer Neighbourhood Board.
- 1.3 The role of the SNB is to:
 - Address local priorities;
 - Hear and monitor complaints;
 - Monitor police performance;
 - Involve the community in problem solving and crime prevention;
 - Feedback to the Community Safety Partnership where appropriate
 - Provide greater police accountability
 - Scrutinise the Neighbourhood Panels
- 1.4 The SNB holds four public meetings a year including an Annual General meeting. This report provides a further update since the last report to scrutiny in March 2015.
- 1.5 For the SNB to maintain an effective level of scrutiny as well as being truly representative of the community of Enfield, it was felt that it needed be made up of between 12-20 members. The current membership of the Safer Neighbourhood Board is attached as Appendix 1. The SNB will also be attended by 1-2 Senior Officers from Metropolitan Police.

- 1.6 At the meeting in July 2015, the Board agreed its priorities for the projects for which it wished to obtain MOPAC funding. These were:
- Serious Youth Violence;
 - Domestic Violence (to include that relating to drug and alcohol misuse).
- 1.7 In addition to the three successful bids outlined in the last update, the Safer Neighbourhood Board has also had an additional two bids for project funding accepted; brief details of the projects are below:

EIYCT & Oasis Hub Enfield – Youth Outreach

- 1.8 This project will target young people in known gang areas via street based outreach and youth centre outreach. Young people will be engaged via mentoring and one to one support in order to divert them away from potential involvement in gangs and antisocial behaviour or crime. Young people would be offered alternative positive activities to participate in such as sporting activities and youth clubs or help provided to find employment or further training, develop interview and CV skills or be supported with substance misuse.

LYRC Crises Action Team

- 1.9 The LYRC (Life Youth Resource Centre) will create a Crises Action Team (CAT) to go into schools, pupil referral units, community centres and churches to prevent and steer away the most vulnerable teenagers from anti-social behaviour. The team will also coach parents and leaders on the early warning signals of young people at risk.
- 1.10 The CAT team will be a quick response team with members who have come from the same environment as the young people they wish to engage and will be based at the LYRC offices in Edmonton. They will also be trained to act as an 'appropriate adult' in an arrest and statement scenario (where an appropriate adult is not readily available).
- 1.11 The CAT will engage directly with young people at risk of gang affiliation or specifically involved at various levels of gun, drugs, knife and gang lifestyles, offering personal support and counselling to assist them in choosing positive life options.
- 1.12 They will also then train those who have been engaged into becoming peer mentors themselves.
- 1.13 Since the start of the project, LYRC have found a film company who will be offering acting and vocal training to participants. Queens Park Rangers FC have also agreed to fully support the programme, offering incentives to CAT members such as tickets to games and coaching facilities.

Funding Bids Agreed by the Safer Neighbourhood Board in 2014/15

2. As detailed at the last update, three projects received funding from MOPAC for 2014/15. These were:

- (a) St Giles Trust SOS Knife Project and Leaflet;
- (b) Parenting Workshops; and
- (c) Visits to Ben Kinsella Exhibition.

The following is an additional update on these projects:

St Giles Trust SOS Knife Project and Leaflet

- 2.1 There are plans to offer this to both secondary and junior schools in the Borough and also to use the leaflets already produced to hand out to young people presenting at A&E.

Parenting Workshops

- 2.2 This project has been completed, with two workshops delivered as part of the ongoing Gang Call-In process. The parents of young people invited were targeted and sessions either side of the Call-In have been delivered.

Ben Kinsella Exhibition

- 2.3 To date, 6 educational establishments have attended the exhibition.
- 2.4 The youth group Ignite visited the exhibition in November.
- 2.5 There has been a meeting with the Safer Schools Police Sergeant and officers will be used to repeat the offer to all schools and any youth organisations. In addition, Police Cadets will be visiting the exhibition during the February half term.

Board Meetings

- 2.6 At each Board meeting it is planned to receive a presentation on a current issue regarding policing or community safety. This ongoing process will enable the Board to be better informed and more able to input in policing issues. Planned items are:
- (a) Hate crime;
 - (b) Gangs
 - (c) Domestic Violence;
 - (d) Integrated Offender Management; and
 - (e) Drugs & Alcohol (misuse)

2.7 Members of the Enfield Youth Parliament attended the meeting in November 2015 and were able to provide the Board with a good insight into issues of crime and safety from a young person's perspective. This meeting was also attended by a MOPAC representative who provided the following very positive feedback: *'The SNB in Enfield is well run, well chaired, with productive discussions and all those attending encouraged to speak'*.

2.8 At the meeting in February 2016, the Board received an introduction to how the Community Payback Scheme was managed in Enfield, and how the Board could nominate projects (one of its functions). Board Members were interested to hear how the London Rehabilitation Company, which has managed the Scheme since February 2015, works closely with the local authority in identifying and managing suitable placements for offenders.

The Board also discussed the issue of improving Public Confidence in the Police, and useful feedback was given to Acting CI Andy Port to take forward. A member of the Enfield Youth Parliament was again in attendance at this meeting to provide a young person's view on this issue.

2.9 In addition, six Board Members have formed an Executive Committee (including the Chair) which has assisted in taking forward the work of the Board. In order to do this, Members within the Committee have been given particular roles; for example, monitoring and dealing with all incoming and outgoing communications or (for two Members) co-ordinating funding bids. Board Members also to continue to be involved in other activities/groups related to issues of crime and community safety, for example:

- Board Members have attended a number of Gold Group meetings (these were multi-agency liaison meetings set up to monitor community issues in light of any major incidents occurring in the Borough);
- Board Members have acted as representatives on other Groups (for example, the Independent Advisory Group);
- Board Members will also be volunteering for CCTV Monitoring Scrutiny Teams (currently being set up by the Community Safety Team) which will visit and monitor the activity of the CCTV Centre at Claverings.
- Board Members have attended training sessions provided by MOPAC

2.10 In summary, the Board has now established itself more fully and continues to effectively monitor issues of crime and community safety.

3. RECOMMENDATIONS

To note the contents of this report.

STANDING CRIME SCRUTINY WORKSTREAM: WORK PROGRAMME 2015/2016

The Role of Scrutiny in Meeting the Public Sector Equality Duty

The Overview and Scrutiny Committee has a key role to play in ensuring that the Council meets all the statutory duties under the Public Sector Equality Duty of the Equality Act 2010, particularly in ensuring that the authority has due regard to the needs of diverse groups when designing, evaluating and delivering services in order to –

- eliminate unlawful discrimination, harassment, victimisation and any other conduct prohibited by the Act.
- advance equality of opportunity between people who share a protected characteristic and those who do not.
- foster good relations between people who share a protected characteristic and those who do not.

In order to do this, the Overview and Scrutiny Committee will scrutinise the Council's Equality and Diversity Action Plan and Annual Achievement Report each year to monitor the Authority's performance. The OS Committee will be flexible enough to pick up on issues of inequality, wherever they arise in the Council work programme, or to delegate to individual workstreams for investigation. OSC has a key role in providing a 'critical friend' challenge to the Council's strategic equality objectives and scrutinising performance in delivering those objectives.

In addition, as part of their normal work programme, each workstream will (where relevant and proportionate) -

- request information about the equality impact assessments/analyses that have been undertaken whenever discussing proposals for new policies or future plans, or for current services, to inform their comments on those proposals or services
- examine these assessments/analyses of impact in detail to check if they are robust and have been developed based on strong evidence and appropriate engagement
- question and consider whether appropriate people have been involved and engaged in developing equality objectives and plans, and when assessing the impact of policies and proposals.
- when procurement award criteria and contracts are determined, consider whether or not specific equality stipulations are required
- Scrutiny may also wish to investigate the accessibility of equality and other published documents, asking questions such as –
 - what is done to promote these documents?
 - what languages or formats is the information available in?
 - which documents are most regularly required?
 - how aware are the public of the Authority's equality plans and performance?

STANDING CRIME WORKSTREAM: WORK PROGRAMME 2015/2016

WORK	Lead Officer	Thursday 11 June (Work Planning)	Thursday, 1 Oct	Tuesday 12 Jan	Tuesday, 22 Mar
Work Programme					
Panel Work Programme 2015/16 – To consider the Panel work programme	Sue Payne	Agree work programme			
Standing Items					
SSCB Partnership Plan & Strategic Priorities – To review and participate in the consultation process on development of the Plan and strategic priorities for 2015 – 16.	Andrea Clemons/ Sue Payne			6 month update- on current plan and progress update –	Progress Update –
SSCB Performance Management – provide a monitoring overview on performance of SSCB	Andrea Clemons/ Sue Payne		Monitoring Update	Monitoring Update	Monitoring Update
Update on Police numbers	Supt Carl Robinson/ Sue Payne		Update	Update	Update
Briefings, Monitoring & Updates:					
Tackling Gangs & Serious Youth Violence Strategy & Action Plan update	Andrea Clemons				Report
Domestic Abuse	Andrea Clemons			Report	
Burglary	Andrea Clemons			Report	
Knife carrying by young people inside and outside of schools- invite Safer Schools lead	PC Steve Hicks		Report		
Safer Neighbourhood Board update	Tim Fellows				Report

Update on PCSO contract	Andrea Clemons		Report		
-------------------------	----------------	--	--------	--	--

This page is intentionally left blank

MINUTES OF THE MEETING OF THE CRIME SCRUTINY STANDING WORKSTREAM HELD ON TUESDAY 12TH JANUARY 2016

MEMBERS: Councillors Joanne Laban (Chair), Patricia Ekechi, Ahmet Hasan, Sarah Doyle, Elaine Hayward and Mary Maguire.

Co-opted Member: Natalie Sherman

Officers: Andrea Clemons, Head of Community Safety, Shan Kilby, Domestic Violence Co-ordinator, Rod Bennet, Community Safety Information Manager, Susan Payne, Corporate Scrutiny Officer, Stacey Gilmour, Corporate Scrutiny Secretary.

Also Attending: Superintendent Carl Robinson
2 Members of the public

1. WELCOME & APOLOGIES

Attendees were welcomed to the meeting. Apologies for lateness were received from Councillors Ekechi and Hasan.

2. DECLARATIONS OF INTEREST

There were no declarations of interest.

3. DOMESTIC ABUSE

RECEIVED a report on Domestic Abuse from Shan Kilby, Domestic Violence Co-ordinator.

NOTED:

- (i) The report updated the Scrutiny Panel on the partnership response to domestic abuse including recent developments nationally and locally;
- (ii) Domestic abuse can have a devastating effect on victims and their families hence why this is a priority piece of work;
- (iii) There continues to be a rise in recorded incidences by the police. Since 2011/12 an increase of 47.4% had been seen;
- (iv) The vast majority of Domestic Abuse offences fall within the Violence against the Person (VAP) category (approx.80%);
- (v) From Jan 2015-Sept 2015 there have been 2550 domestic incidents that the police have been called to. The comparison with the previous 12 months is set to increase by about 21%. There are challenges around resourcing to meet this demand;
- (vi) Shan updated Members on recent developments around Domestic Abuse. The first peer support domestic abuse group launched in

CRIME SCRUTINY STANDING WORKSTREAM - 12.1.2016

December 2015. This is being co-ordinated by volunteers in Enfield and aims to provide peer support for women who have or are experiencing domestic abuse and to reduce isolation. The aim is to extend this across the borough and for a network of groups to be available to residents;

- (vii) Another recent development was the Serious Crime Bill which received Royal Assent on 8th March 2015 and became the Serious Crime Act. This contains legislation for coercive control which is now a criminal offence, having come into force on the 29th December 2015;
- (viii) Information was provided on Funding which included details on a recent successful bid to the Department of Communities and Local Government (DCLG). This is a collaboration with numerous partners which include the London boroughs of Barnet, Camden, Haringey and Islington. Enfield is the lead for this project which has secured £100,000 to help victims access support and refuge who have complex needs including mental health;
- (ix) Shan spoke about future work and advised that there are numerous plans in place to continue developments in Enfield. Training had started to be provided to all multi-agency partnerships on coercive control. Domestic abuse training is mandated for all Children's Social Workers and also delivered through the Safeguarding Boards for Children's and Adults;
- (x) Training will be extended to the business sector in 2016, particularly focusing on areas where victims may disclose e.g. hairdressers, nail salons, banks and dental surgeries;
- (xi) In conclusion Shan explained that the aim is to ensure that there are increased opportunities for help seeking and providing help and advice across our communities. This is to enable victims and their families to access help and support at an earlier time, reduce repeat victimisation and reduce the overall impact on the victim and services.

The following questions/issues were:

- Discussions took place regarding the increase in the reporting of Domestic Violence. There were a number of reasons for this including increased confidence in Police colleagues, better understanding across communities of the support and help available which has been achieved through campaigns run by the Local Authorities, as well as much more reporting across the media and social networking platforms;
- A question was asked as to how success in tackling Domestic Violence is measured. Shan advised that the measure is in preventing repeat victimisation and the aim was to continue to improve on this;
- Councillor Doyle asked if there was any pattern in the age group of victims. It was advised that DV (Domestic Violence) is regarded very much as a gender crime, with 16-24 year old females being a particularly high risk category. It was noted however that men were also victims of DV. It was also recognised that certain vulnerable groups posed a higher risk, for example disabled and deaf women;

CRIME SCRUTINY STANDING WORKSTREAM - 12.1.2016

- In response to a question asking when a Safeguarding Child issue would become a DV issue Members were advised that 70% of referrals through the Single Point of Entry route (SPOE) included a Domestic Violence element. This however was not necessarily as a victim, but could be as a result of witnessing DV. In order to separate figures for perpetrators and victims each individual case would need to be investigated as these were often very complex;
- Shan provided information regarding the working relationship with Community Partnerships and other such groups and spoke about the work which took place with Voluntary Sector Partners, the Faith Forum as well as the Parent Engagement Panel and the new Peer Support Group;
- Discussions took place around the new Coercive Control Law and how this opened more doors when dealing with DV. More work would take place with communities to provide further help and advice on what sort of behaviour is and isn't acceptable. Superintendent Robinson spoke about how the Police were dealing with this new area of business. He advised that the CPS had produced guidelines which were being worked through, frontline officers were being educated on the new legislation and training was being rolled out to multi-agency partnerships;
- Information was provided on the provision of Refuges in Enfield and nationally and the way in which these worked. For example some Refuges would not accept boys over the age of 12/13, whilst others had a policy of not taking in women over a certain gestation in pregnancy due to practical reasons. Lots of Refuges do offer family units. Nationally, a shortage of Refuge places is an issue. In excess of 100 women a day are being turned away due to lack of spaces.
- The Chair asked what was being done to prevent Domestic Violence in the first place as she felt the report focused on what happens once it has been recognised. Shan assured Members that a lot of work did take place around prevention and said that a good place to start is to tackle a culture issue around the acceptance of certain behaviour. She said that the teaching of PSHE in schools will include understanding healthy relationships and consent. Children need access to what is and isn't normal and acceptable behaviour. It was agreed therefore that education is key to preventing DV as well as continuing to ensure that information and advice is accessible to communities and this was an area that would continue to be prioritised and developed.

4. SSCB PERFORMANCE MANAGEMENT

RECEIVED a report from Andrea Clemons, Head of Community Safety,

NOTED:

- (i) Anti-Social Behaviour calls (-14.2%), Burglary (-8.6%), Theft of Motor Vehicles (-18.4%) and Serious Acquisitive Crime (-3.3%) are all currently experiencing reductions in the rolling 12-months to 14th December 2015;

CRIME SCRUTINY STANDING WORKSTREAM - 12.1.2016

- (ii) Overall, MOPAC seven recorded crime categories are experiencing a -2.9% decrease in the rolling 12 months to date;
- (iii) There has been a large increase in Police referrals to MARAC (Multi Agency Risk Assessment Conference). This is partially due to improvements to the systems through which referrals are made;
- (iv) A significant increase in recorded knife injuries has been noted across the borough since mid-2014, with some short term reductions;
- (v) Five of the seven MOPAC indicators are currently experiencing in the 12-months rolling (Criminal Damage +2.4%, Robbery +18.5%, Theft from M/V +2.0%, Theft from Person +0.9% and Violence with Injury +3.3%);
- (vi) A detailed table was provided showing the performance overview for MOPAC 7 and SSCB Priorities;
- (vii) A London Borough Ranking Table was also looked at, showing MOPAC 7 and total notifiable offences percentage changes;
- (viii) Further information and figures were provided for Serious Acquisitive Crime (SAC), which includes Robbery, Vehicle Crime and Burglary;
- (ix) Information and figures were also provided on Violence Against Women & Girls (VAWG) and Serious Youth Violence. The last Domestic Abuse Strategic Sub-group (DASG) performance framework was updated in November 2015 and the summary headlines of this were discussed;
- (x) Recorded Serious Youth Violence in Enfield has experienced an increase of +5.7% over the past 12 months. During the same period London has recorded at +6.1% increase;
- (xi) Haringey are experiencing larger increases in gang violence, however Enfield has a similar number of serious youth violence victims.

The following questions/comments were raised:

- With regards to Enfield's burglary figures Andrea explained that the borough has a much higher housing stock than other boroughs, hence why there is a difference in figures;
- Andrea advised that Enfield's Serious Youth Violence figures had become more in line with London as an average. This was largely due to additional Police presence and stronger working with partnerships;
- Some crimes had taken place right on the Enfield and Haringey border, which consequently reflected in the figures. The aim was to develop an Action Plan to address look at ways of monitoring activity on the Enfield and Haringey border;
- Councillor Maguire asked for further explanation of the Hate Crime figures, detailed in Table 1 of the report. Andrea explained that there had been 310 recorded Hate Crimes in the last 12 months. Enfield had experienced a 10.7% increase in reports but this was half of the MPS increase. Andrea advised that Enfield have an active Hate Crime Forum and also monitor this issue through the Faith Forum and EREC;
- The question was raised as to whether there had been an increase in reports of Islamophobia due to the recent Paris attacks and other world-wide events. Andrea advised that Enfield had not seen an increase and reports were in fact the second lowest in the MET;

CRIME SCRUTINY STANDING WORKSTREAM - 12.1.2016

- Councillor Maguire questioned the Knife Crime figures and was interested to know how arrest rates and cleaning up rates were gauged. Andrea said that these figures could be provided by the Youth Offending Team. She explained that the general observation was showing that younger people were committing slightly more serious offences with slightly more chance of going onto custody. Therefore a lot of work involved keeping young people out of the youth offending system. Andrea said she would be happy to bring some Youth Offending figures to a future meeting.

Action: Andrea Clemons

- Superintendent Robinson provided an update on Operation Omega and spoke about the successes that had been seen as a result of this Operation;
- Clarification was provided on the new Knife Crime law that was now in force nationally;
- Discussions took place about some recent trouble between Chace Community and Enfield Grammar Schools. Andrea explained that this was a situation that had escalated following a dispute between two individuals. The Schools had been spoken to and those involved dealt with accordingly. A dispersal order had also been issued from 2.30pm of this afternoon, which would remain in place for 24 hours then reviewed;

5. **BURGLARY**

RECEIVED a verbal report from Rod Bennett on Burglary in the borough.

NOTED:

- (i) Currently experiencing an **-8.6% reduction (-265)** in the rolling 12-months and a **-20.3% reduction** compared to 2011/12;
- (ii) Very seasonal crime with low months (April-September) and a winter seasonal peak (October-March);
- (iii) Burglary is one of our higher volume crimes, accounting for nearly 1 in 4 of all MOPAC 7 crimes;
- (iv) This work is monitored through the Enfield Joint Tasking Action Group (JTAG);
- (v) Burglary initiatives have been developed to deliver further burglary reductions, most notably the Safehouse project, which targets vulnerable victims, neighbourhood watch and the MetTrace project.
- (vi) The Met Trace (Smart Water) operation commenced earlier this year and will run for three years;
- (vii) In this year, the aim is to deliver 9,348 kits to Enfield residents. Up until early January, 6,699 have been delivered along with additional items we have provided such as timer switches, window shock alarms and leaflets as appropriate;
- (viii) Phase 1 covers addresses in 7 wards which have been identified by the Police using their information systems. Enfield Highway, Enfield

CRIME SCRUTINY STANDING WORKSTREAM - 12.1.2016

- Lock, Palmers Green, Ponders End, Southgate Green, Southgate and Turkey St;
- (ix) We have had a total of 650 kits which residents across Enfield have refused. It is planned that these kits will be re-used in other planned areas of Enfield;
 - (x) Figures from the Police state that since the 'Met Trace' operation commenced in Enfield in the early summer, there has been a 39% reduction in burglary offences in areas signed up to Smartwater;
 - (xi) Signs advertising that Smartwater is in use within an area are due to go up soon;
 - (xii) SafeHouse works to provide support to vulnerable people who are victims of crime. It will provide advice and a lock fitting service to protect our most vulnerable residents from being re-victimised;
 - (xiii) This scheme works with relatively low numbers of people (2/3 a week on average), mainly those who are victims of burglary or domestic abuse;
 - (xiv) Burglary is also a focus for our integrated offender management (IOM) service, with this being one of the crimes that we focus on. When we look at our offenders on the IOM cohort, over a quarter are associated with burglary in some way;
 - (xv) This work is of benefit, with the re-offending rate for acquisitive offences in Enfield (based on CRC data) being around 35% in Enfield compared to around 42% across London (Please note there is a time lag with reoffending data);
 - (xvi) We also work with other areas and partners wherever possible to prevent burglary. We have provided leaflets in conjunction with trading standards around cold callers and rogue traders to avoid people becoming victims of burglary artifice. We have also had leaflets delivered with 'meals on wheels to get messages to elderly residents and have worked with council housing to provide stickers on UPVC doors when fitted to remind residents that they must 'lift and lock' to ensure their property is safe.
 - (xvii) Finally, we have run some burglary prevention campaigns to give advice to residents. These were done during early December for maximum impact and included the JCDecaux boards across the borough along with newspapers and online.

The following issues were raised:

- Discussions took place regarding the Smart Water Scheme. Superintendent Carl Robinson said he had been involved the start of this scheme in Brent and had seen some great results. He went on to say that there had been some really positive feedback from residents since the scheme had been introduced in Enfield and he hoped to roll it out to more areas across the borough if and when resources allowed;
- The Chair asked what work took place with our partnerships who deal with the older generation of the borough. Rod advised that his team worked closely with the Over 50s Forum. He also provided further information on SafeHouse and the support this offered. The team also

CRIME SCRUTINY STANDING WORKSTREAM - 12.1.2016

worked closely with Police colleagues to find out about events in the borough to attend and provide advice and support where necessary.

- Councillor Doyle questioned the reasons behind seasonal burglaries and asked why there was an increase in the winter months. Rod explained that the darker winter months provided more opportunities for burglars as they were less likely to be seen, as did Christmas time when properties were targeted for presents. As an example Rod advised that during the summer months approximately 150 burglaries a month were reported as opposed to an average of 250 per month during the winter months.

6. SSCB PARTNERSHIP PLAN & STRATEGIC PRIORITIES-6 MONTH UPDATE

RECEIVED a verbal update from Andrea Clemons.

NOTED:

- (i) MOPAC 7 will run for just over another year therefore Enfield's priorities will remain the same for this duration. Performance figures will be updated at the end of the financial year at which point it will be apparent as to what areas of work still need to be delivered;
- (ii) The focus for 2015/16 was to tackle Serious Youth Violence, in particular gangs. An agreement was made to work closely with Health Agencies and a project was currently on going at North Middlesex A&E Department whereby a youth worker was in place to obtain information from people presenting to A&E as victims of knife crime etc. This project was proving really successful in the amount of raw data that was now able to be obtained;
- (iii) Andrea provided information on the various tasking processes and the work taking place around these. She also spoke about new legislations which had been introduced, an example of which was the Criminal Behaviour Orders, and how these legislations could be of use;
- (iv) ASB (Anti-Social Behaviour) had also been another focus for Enfield. The team had now taken over responsibility for Council Housing. CCTV had expanded over a number of areas as a result of which there had been some really key successes;
- (v) Andrea spoke about the introduction of PSPOs (Public Space Protection Orders) and was hopeful that this was something that could be looked at Borough wide;
- (vi) In conclusion going forward, work would continue on the MOPAC 7 priorities in addition to focusing on any issues specific to Enfield. Close work would continue with groups such as REACT/CAPES especially in relation to issues such as ASB, street drinking and littering.

The Chair thanked Andrea for her informative update.

7. UPDATE ON POLICE NUMBERS

CRIME SCRUTINY STANDING WORKSTREAM - 12.1.2016

An update on Police numbers in the Borough was provided by Superintendent Carl Robinson. He stated that the target for Enfield Police is 561 officers. There are currently 541.96 police officers in post which comprises both full time and part time officers.

Superintendent Robinson went on to explain that Police numbers will fluctuate for a number of good reasons. Officers will retire, resign, seek lateral development to specialist teams, move to other Boroughs or move on promotion. As a Borough Enfield have invested in ensuring it knows exactly where its staff are at and have a monthly personnel planning meeting to forecast movements and ensure that each of the three main portfolios (Emergency response, Neighbourhoods and CID) all have as close to their budgeted target as possible.

A detailed table was produced showing the most recent comparison data across the MPS – although this was produced at the end of November with future known actuals and vacancies shown to the end of February 2016. It should be noted that Enfield will be showing 557 officers from February 2016 as opposed to 561 in the last report.

The following issues were raised:

- (i) 1900 new probationers were expected through the system during the next financial year. This amounted to 60 per borough which equated to 5 new officers per month. Given these figures, plus the fact that not as many officers had been lost as previously anticipated, the future looked very promising.
- (ii) Every officer's details on the borough is recorded on appropriate MPS HR systems. Superintendent Robinson said he was keen that internal systems are kept as up to date as possible to ensure an accurate record of the exactly how many officers on the Borough and their locations.
- (iii) Discussions took place regarding the continued problem of beggars in the Borough, particularly around the Upper Edmonton Ward. Andrea explained in detail the action being taken to deal with this type of problem as sometimes they involved very complex issues.

8. WORK PROGRAMME 2015/16

The Work Programme for 2015/16 was noted.

9. MINUTES OF THE MEETING HELD ON 1 OCTOBER 2015

AGREED the minutes of the meeting held on 1 October 2015.

10. ANY OTHER BUSINESS

The Chair asked for an update on the current position with the PCSO contracts.

CRIME SCRUTINY STANDING WORKSTREAM - 12.1.2016

Andrea explained that the current contracts had been extended until the end of March 2016; this was to enable a better understanding of the overall position for the MET. However it had been agreed by the Metropolitan Police that, going forward, a minimum number of PCSOs would be retained.

Once the position for the Met and any additional details had been fully understood, options would then be investigated to see what was available and decisions on future contracts would be made.

11. DATES OF FUTURE MEETINGS

NOTED the date of the next meeting as 22 March 2016.

This page is intentionally left blank